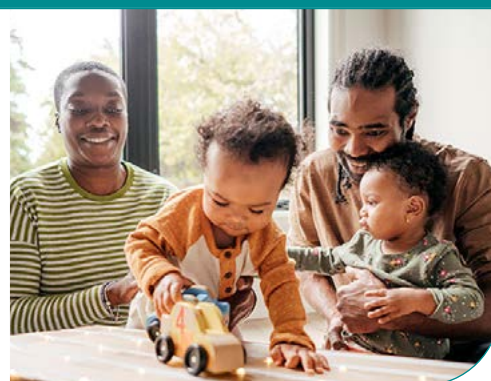


# Early intervention for children with developmental delay or disability



If your child is developing differently compared with other children, or has a disability, then early intervention can help your child reach their potential.

Early intervention includes support for families and therapies such as speech therapy and occupational therapy to help your child. The National Disability Insurance Scheme (NDIS) can cover the cost of therapies and equipment that help your child's development.

The Early Childhood Approach is part of the NDIS. It is specifically for younger children aged 0 to 6. You don't need a formal diagnosis for your child to get early intervention. You know your child best, and early intervention works in partnership with your family and your child.

To be eligible for the NDIS you need to be an Australian citizen or permanent resident. However, your child can access free early intervention even if you or your child do not meet the residency requirements.

To find out more, contact the NDIS Early Childhood Partner in your local area:

Where you live	Early Childhood Partner	Contact details
<b>Metropolitan</b>		
Bayside Peninsula Brimbank Melton Hume Moreland North Eastern Melbourne Western Melbourne	Brotherhood of St Laurence	Call 1300 275 534 <a href="http://www.bsl.org.au">www.bsl.org.au</a>
Inner Eastern Melbourne Outer Eastern Melbourne	Link Health and Community	Call 1300 552 509 <a href="https://www.linkhc.org.au/">https://www.linkhc.org.au/</a>

Where you live	Early Childhood Partner	Contact details
<b>Regional</b>		
Barwon	Barwon Child, Youth and Family	Call 1300 012 293 <a href="http://www.bcyf.org.au">www.bcyf.org.au</a>
Goulburn, Mallee, Loddon	Intereach	Call 1300 448 226 <a href="http://www.intereach.com.au">www.intereach.com.au</a>
Central Highlands Wimmera South West	Latrobe Community Health Service	Call 1800 242 696 <a href="http://www.lchs.com.au">www.lchs.com.au</a>
Outer Gippsland Inner Gippsland	Link Health and Community	Call 1300 552 509 <a href="https://www.linkhc.org.au">https://www.linkhc.org.au</a>
Ovens Murray	Merri Community Health Service	Call 1300 665 437 <a href="http://www.merrihealth.org.au">www.merrihealth.org.au</a>

## Related topics

Accessing NDIS support for children aged 0 to 8

<https://www.acd.org.au/accessing-ndis-support-for-children-aged-0-to-8>

Getting started at child care and kindergarten

<https://www.acd.org.au/getting-started-at-child-care-and-kinder>