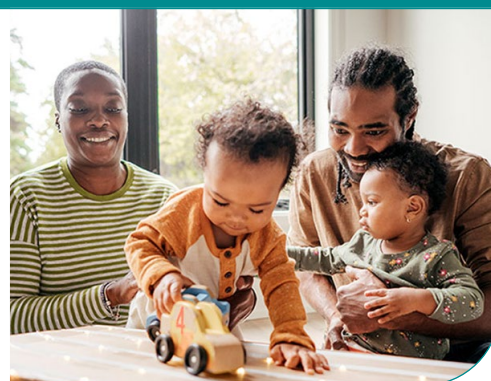


Early Childhood Early Intervention



If your child has a disability, or is developing differently compared with other children, then early intervention can help your child reach their potential.

Early Childhood Early Intervention (ECEI) is part of the NDIS. It is specifically for younger children. You don't need a formal diagnosis for your child to get early intervention.

Early Childhood Early Intervention can cover the cost of therapies and equipment that can help your child's development. You know your child best, and early intervention works in partnership with you and your child.

To be eligible for the NDIS you need to be an Australian citizen or permanent resident. However, your child can access early intervention even if you or your child do not meet the residency requirements. Contact your local Early Childhood Partner for more information.

To find out more, contact the Early Childhood Partner in your local area:

Where you live	Early Childhood Partner	Contact details
Metropolitan		
Bayside Peninsula Brimbank Melton Hume Moreland North Eastern Melbourne Western Melbourne	Brotherhood of St Laurence	Call 1300 275 534 www.bsl.org.au
Inner Eastern Melbourne Outer Eastern Melbourne	Link Health and Community	Call 1300 552 509 www.monashlink.org.au
Regional		
Barwon	Barwon Child, Youth and Family	Call 1300 012 293 www.bcyf.org.au
Goulburn, Mallee, Loddon	Intereach	Call 1300 448 226 www.intereach.com.au
Central Highlands Wimmera South West	Latrobe Community Health Service	Call 1800 242 696 www.lchs.com.au
Outer Gippsland Inner Gippsland	Link Health and Community	Call 1300 552 509 www.monashlink.org.au
Ovens Murray	Merri Community Health Service	Call 1300 665 437 www.merrihealth.org.au